




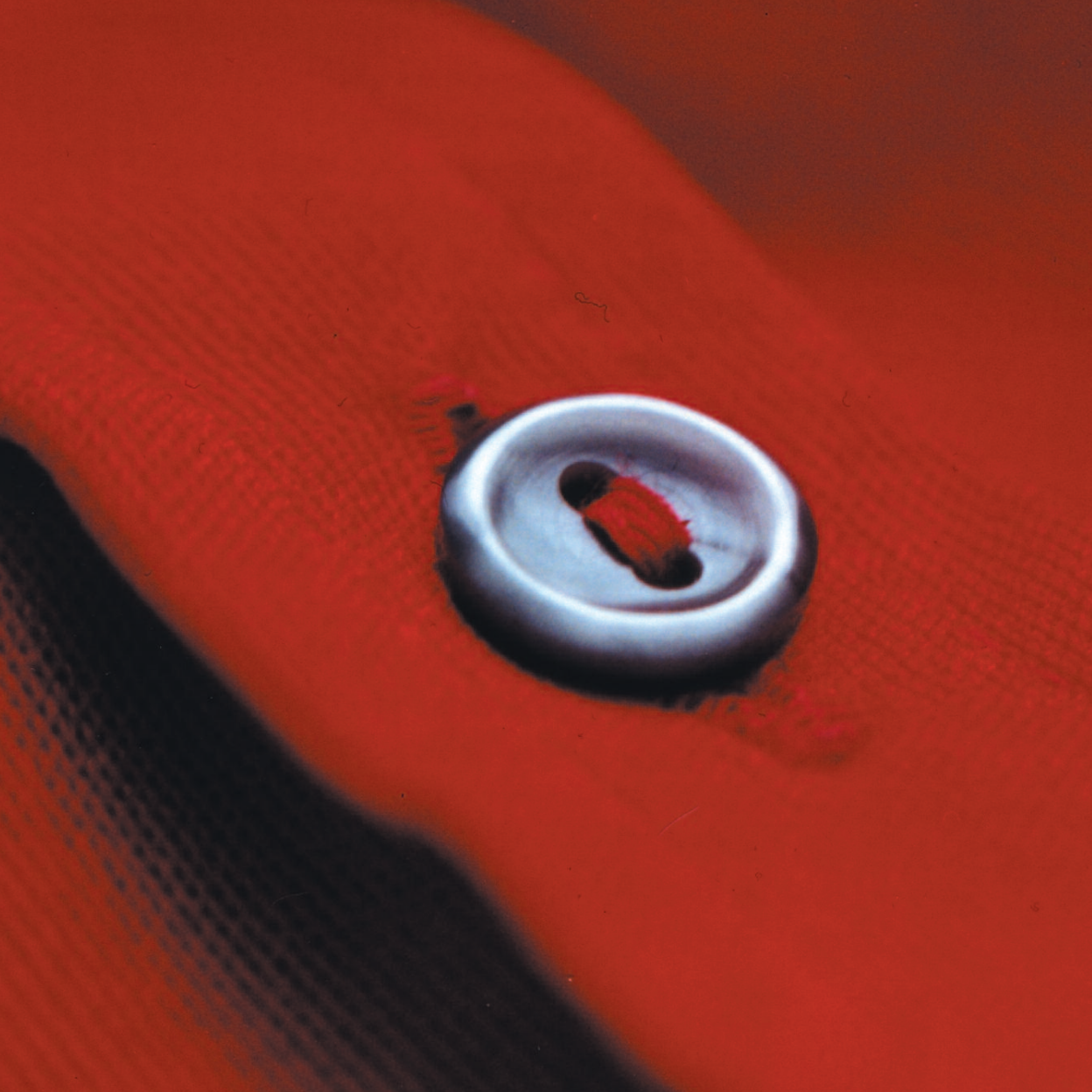


230 - 234 Westbourne Grove

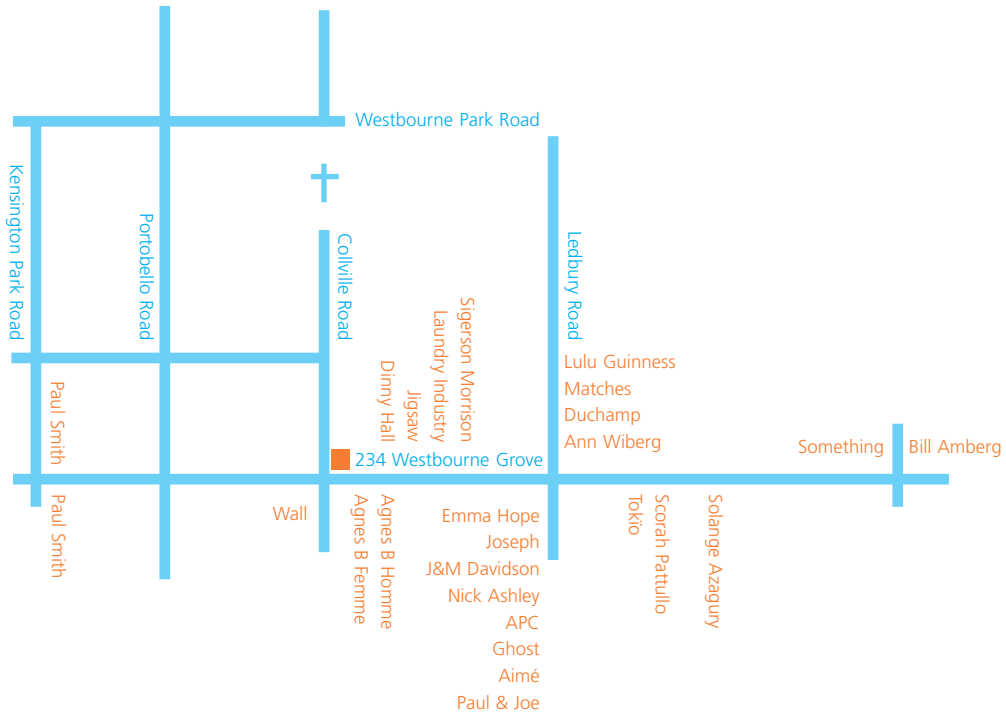


1,976 - 7,295 sq ft
Retail space **in:** the heart
of the highly fashionable
Westbourne Village



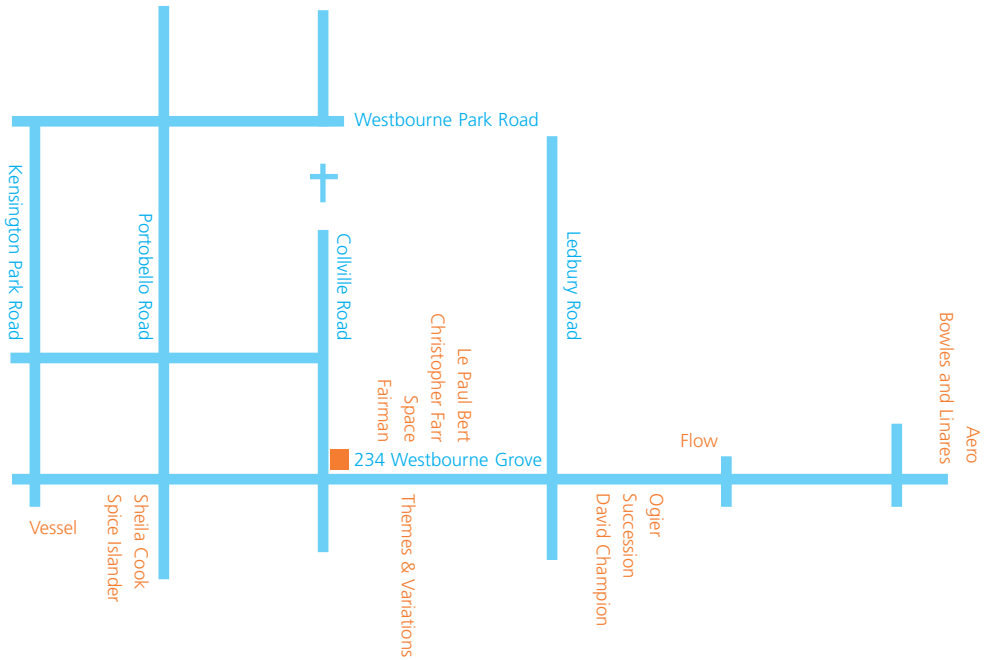


in:fashion



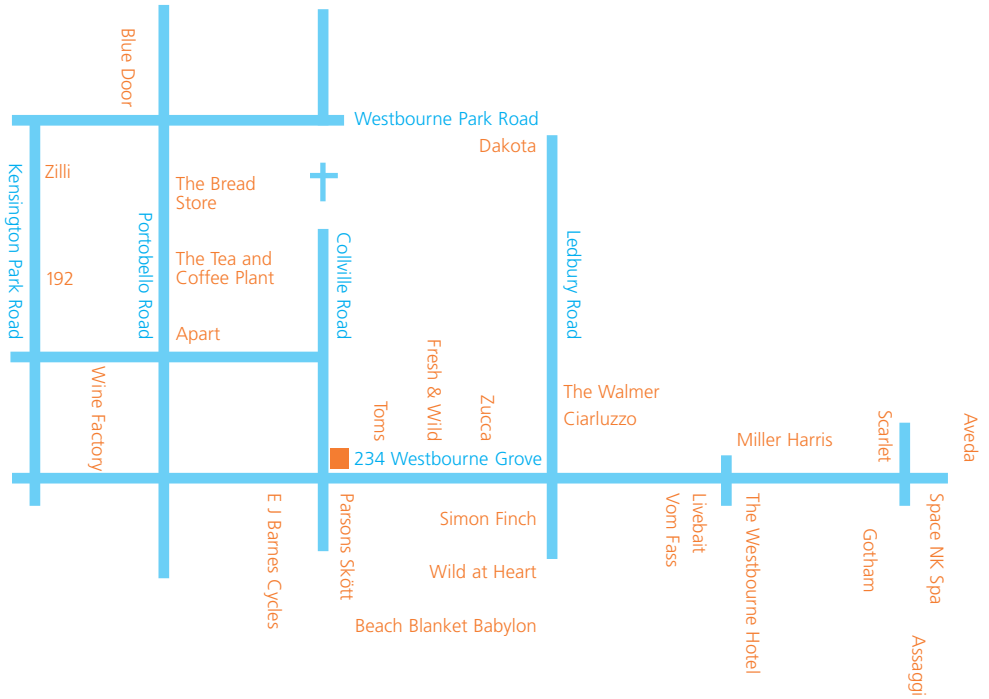


in:terior

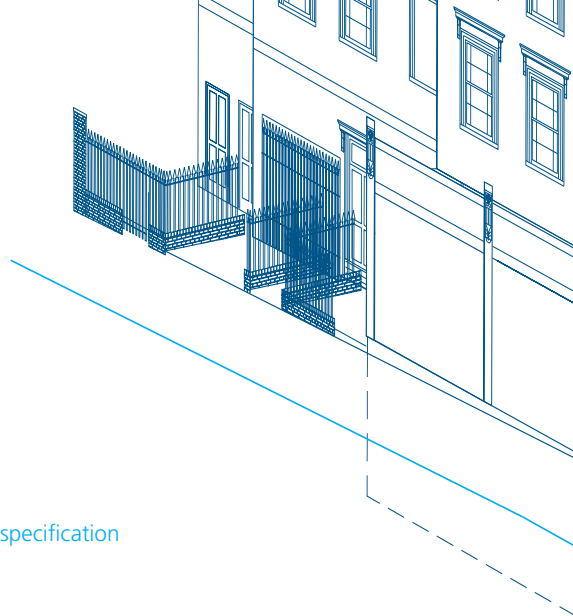




in:dulge



in:formation



- Westbourne Grove, Notting Hill, London W11
- Brand new contemporary space provided to shell specification
- Available to occupy early Summer 2001
- New 20 year FRI leases
- For further information please contact the joint agents
Nelson Bakewell +44 (0)20 7544 2000
Orme Prime Retail +44 (0)20 7499 0440

Developer: Brooks Place 

Misrepresentation Act: Nelson Bakewell Limited and Orme Prime Retail for themselves and for the vendors or lessors of this property whose agents they are, give notice that (1) These particulars do not constitute, nor constitute any part of, an offer or a contract (2) All statements contained in these particulars as to this property are made without responsibility on the part of Nelson Bakewell Limited and Orme Prime Retail or the vendors or lessors (3) None of the statements contained in these particulars as to this property are to be relied on as statements of representations of fact (4) All measurements are approximate and no responsibility is taken for any error, omission or mis-statement and that any intending purchasers or tenants must satisfy themselves by inspection or otherwise as to the correctness of each of the statements contained in these particulars (5) The vendors or lessors do not make or give and neither Nelson Bakewell Limited and Orme Prime Retail nor any person in their employment has any authority to make or give any representation or warranty whatever in relation to this property. Unless otherwise stated, all prices and rents are quoted exclusive of VAT. Any intending purchasers or lessees must satisfy themselves as to the incidents of VAT in respect of any transactions (6) No liability will be accepted by Nelson Bakewell Limited and Orme Prime Retail or the vendors or lessors for the building's compliance with the British Standards Institute definition of Year 2000 conformity requirements (BSI-DISC2000-1). Purchasers or tenants should satisfy themselves in this regard. 2001. **Brochure designed by newlevel.co.uk**



NET INTERNAL AREAS SQ FT

NET INTERNAL AREAS SQ M

230 Westbourne Grove

2,077

192.95

232 Westbourne Grove

1,976

183.57

234 Westbourne Grove

3,242

301.18

ground floor

COLVILLE ROAD

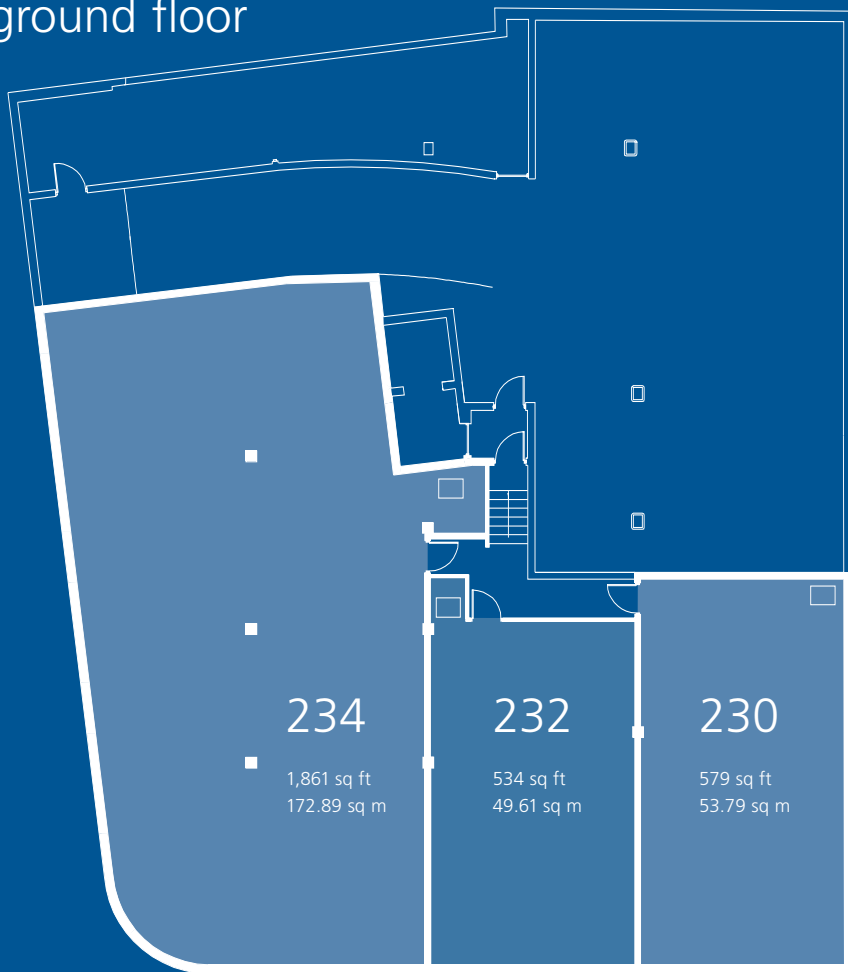
ceiling height

12'4"
3.77m



WESTBOURNE GROVE

lower ground floor



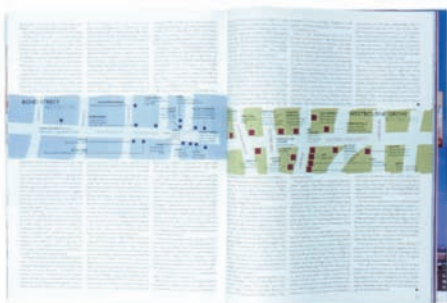
ceiling height

10'11"
3.33m

in:print



Vogue February 2000



Elle Decoration October 2000