



Vencourt Place 261 King Street Hammersmith W6

Freehold office building for sale

Features

- Full height glazed atrium style entrance
- Pitched ceilings and exposed steel trusses
- Solid oak wooden floors
- North light skylights
- 3 compartment underfloor and steel perimeter trunking
- Halogen uplights

Category II downlights

New Central Heating

New WC accommodation

On-site car parking

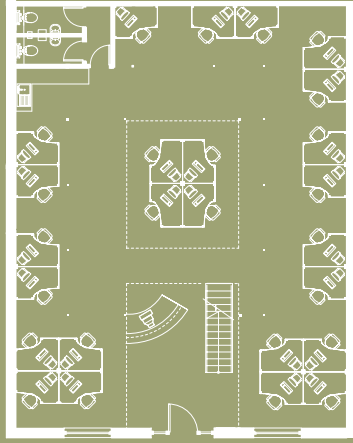




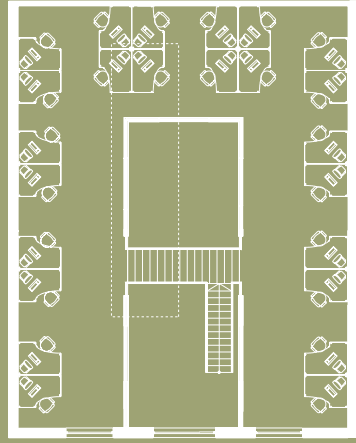
3540 sq ft

(328.8 sq m) approx.

Ground Floor 1980 sq ft (183.9 sq m) approx.



First Floor 1560 sq ft (144.9 sq m) approx.



Vencourt Place is a quiet mews running south off King Street just over half a mile West of the Centre of Hammersmith. Ravenscourt Park (District line) and Hammersmith (District, Piccadilly, Hammersmith & City lines) underground stations are close by. The excellent retail, restaurants and health club facilities of Hammersmith and Chiswick are close to hand.

2 Vencourt Place



For viewing and further information please contact Boston Gilmore on **020 7603 1616** or Hargreaves Newberry Gyngell on **020 7355 2727**



A development by Devonshire Property Investment Ltd and Brooks Place

